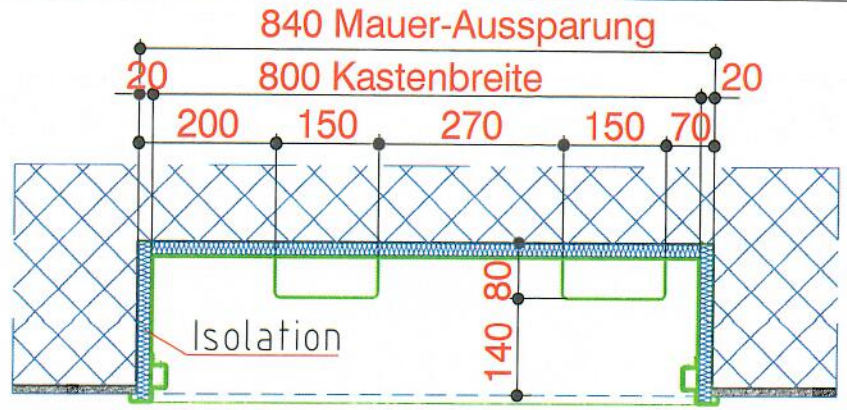
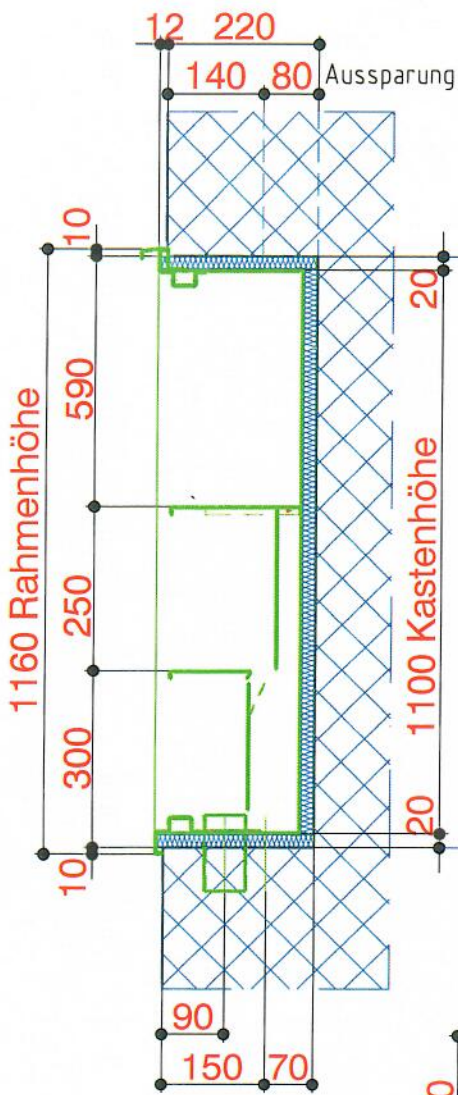


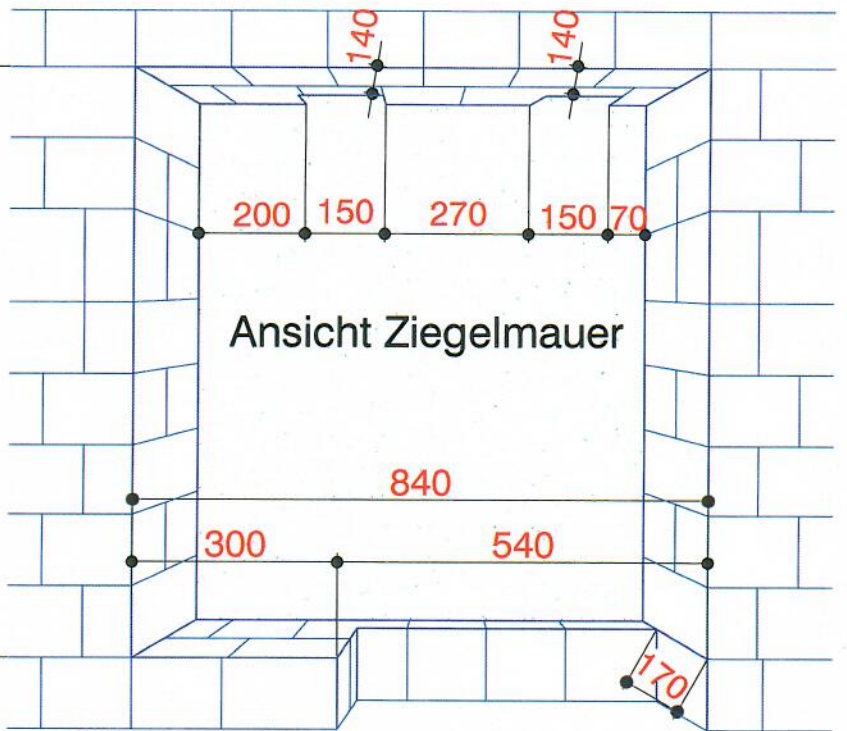
Isolation 20mm



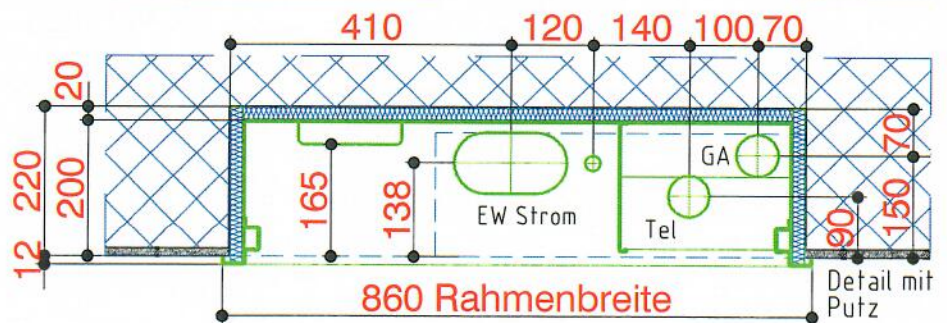
Grundriss Oberseite



Vertikalschnitt



Ansicht Ziegelmauer



Grundriss Unterseite

Detail mit Putz

Positionsmasse für Sichtbeton

EW - Strom	Ø 90mm
EW - Erdung	Ø 30mm
CATV (GA)	Ø 60mm
TELEFON	Ø 60mm

