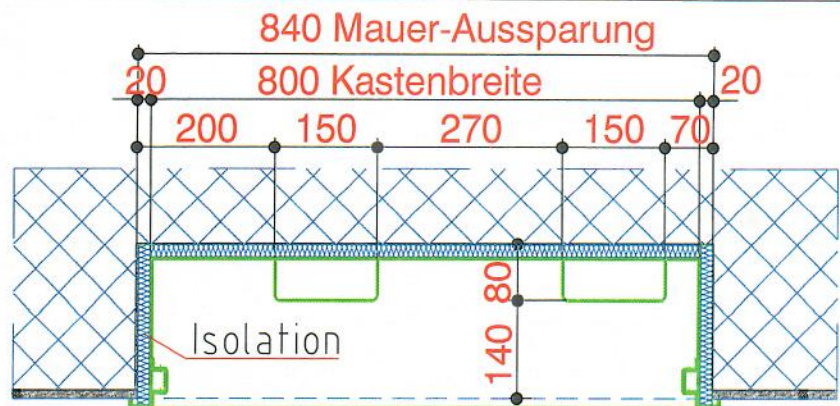
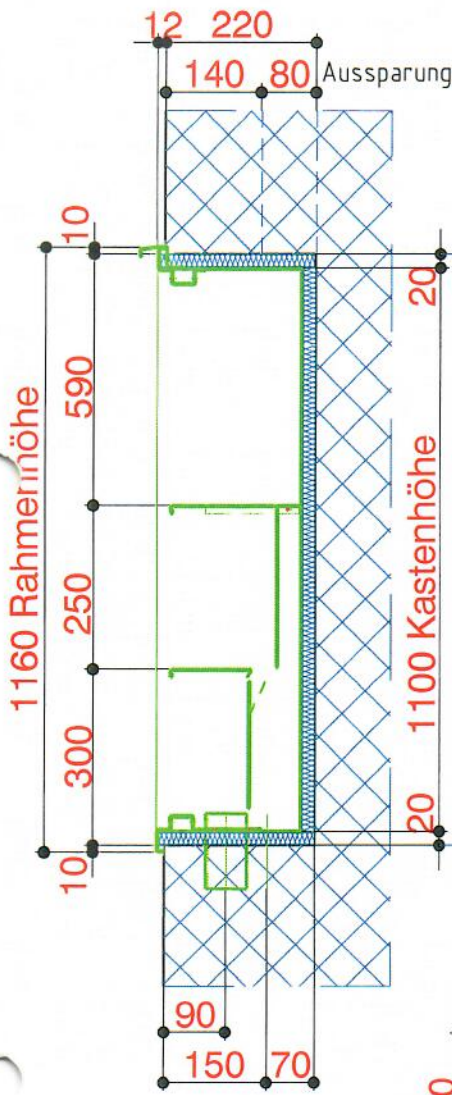


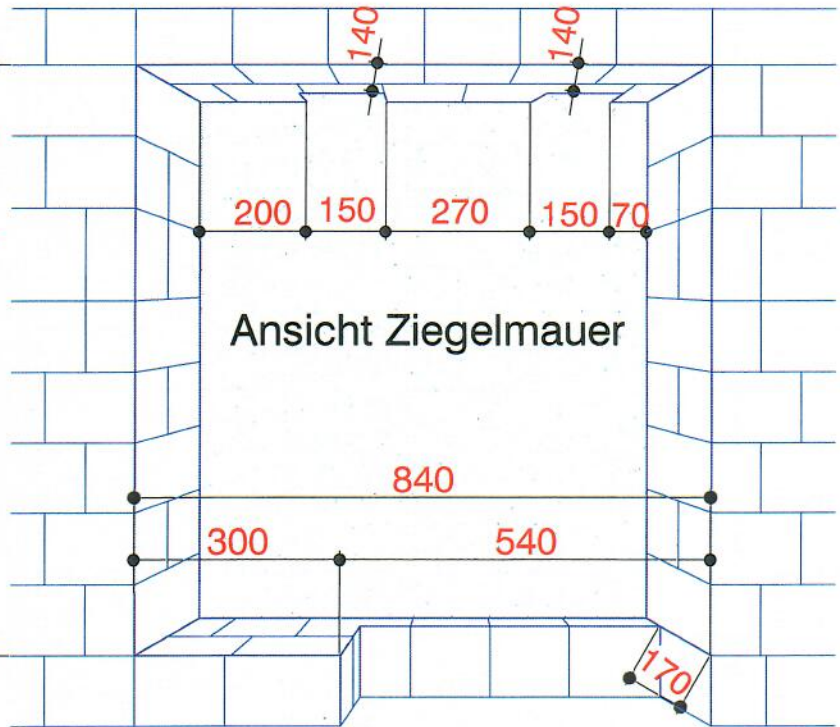
Isolation 20mm



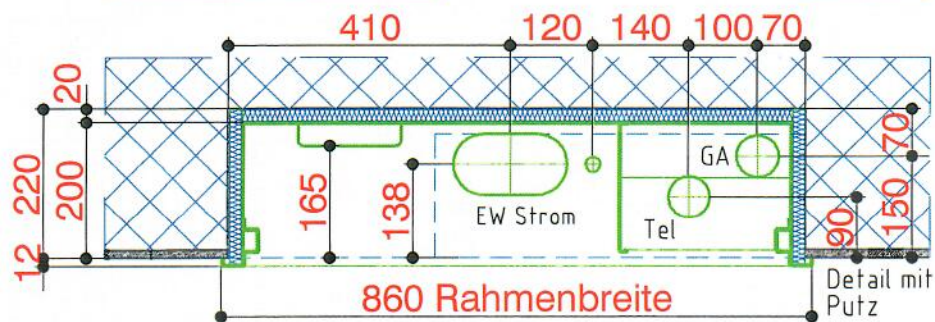
Grundriss Oberseite



Vertikalschnitt



Ansicht Ziegelmauer



Grundriss Unterseite

Positionsmasse für Sichtbeton

EW - Strom	∅ 90mm
EW - Erdung	∅ 30mm
CATV (GA)	∅ 60mm
TELEFON	∅ 60mm

